



BOSTON

USA

GET
 Global Education Tumulka
 Franz-Joseph-Str. 9 - 80801 München
 Tel. +49 (0)89/41 42 45 4-0
 Fax +49 (0)89/41 42 45 4-22
 info@get-education.com
 www.get-education.com



ADDRESS: WASHINGTON ST, BRAINTREE, MA 02184, UNITED STATES



For students keen to study in the USA's academic capital our Boston school provides the ideal location.



OVERVIEW

Our campus is a short ride from the city of Boston and close to prestigious universities such as Harvard, MIT and Boston University – allowing you to enjoy everything Boston has to offer. Twenty minutes from downtown Boston, CATS Academy's proximity to the metropolitan area provides an extension to our campus. You can take part in a wide range of academic, athletic, and social experiences across the city and at many of the top universities and colleges.

THE SCHOOL

CATS Academy Boston combines the experience and values of a traditional American boarding school with a new, state-of-the-art campus. The campus is located in the leafy suburb of Braintree and is just 10 miles from downtown Boston and the beach. The campus covers more than 20 acres and features: 43 classrooms including 6 language labs. All boarding accommodation is on the campus grounds. There are 5 residences which have 449 single and shared rooms. We have invested over \$1m into campus security so you feel safe and secure at all times.

- COURSES:**
- CLASSIC COURSE
 - IVY LEAGUE PROGRAM
 - STEAM
 - CODING COURSE
 - PHOTOGRAPHY
 - ILLUSTRATION & COMICS
 - FASHION
 - FILM MAKING
 - YOUNG PROFESSIONAL CERTIFICATE

ACCOMMODATION:
 RESIDENTIAL

BOSTON, USA

QUICK INFO



AGES
 9 - 18*
 (Groups)
 12 - 17
 (Individuals)



GROUPS & INDIVIDUALS



ACCOMMODATION
 Residential



15
HOURS
 of English lessons



7
EVENING
 ACTIVITIES
 per week



1
FULL DAY
 Excursion
 per week



4
HALF DAY
 Excursion
 per week

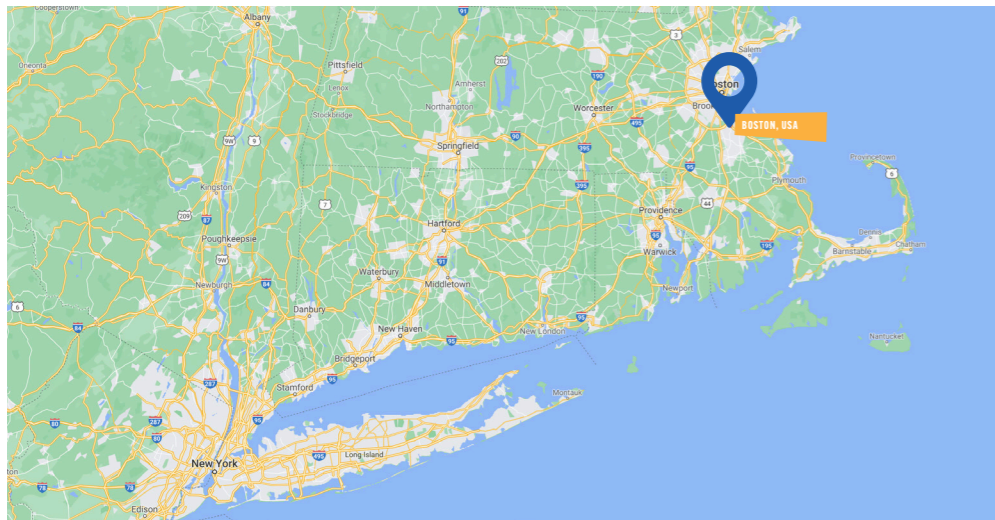
WHAT'S INCLUDED? (CLASSIC COURSE)

*18 year old students only accepted as part of a group where all students are returning to secondary education in September 2024. 18 year olds must follow all school rules as minors. Separate rules apply regarding lessons and activities, please enquire.

BOSTON USA

ACCOMMODATION / FACILITIES

Total Capacity Residential	400	Max. ratio of showers/toilets to beds	1:1
Ensuite	✓	Kitchen for Group Leader use	✓
Standard	✗	Laundry - service wash	✗
Single	✓	Laundry - self-service	✓
Twin	✗	WiFi access	✓
Multi-bed	✗	Drink making facilities	✓
Television Lounge	✓	Vending machines	✓
Common room	✓	Swimming pool	✗
School Store	✓	Coeliac / Special diets on request **	✓
Towels provided	✓	Halal food on request **	✓



PUBLIC TRANSPORT INFORMATION:

Nearest airport: Boston Logan International Airport (30km)
35 minutes by taxi from airport to school

WHAT'S INCLUDED:



TUITION

Students will take part in 15 hours of English language lessons per week. Lessons are topic based and designed to be fun, energetic and informative. They enable students to use their English in real world situations and increase their confidence.



ACTIVITIES

We offer a variety of onsite activities including sports, arts and crafts and team games. Our activities provide opportunities for students to use the English they have learnt and make international friends.



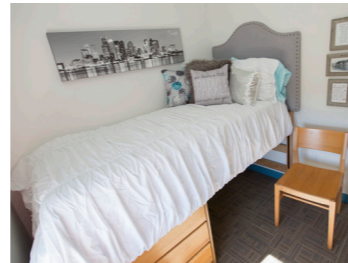
EXCURSIONS

Full and half day excursions allow students to really get to know Boston and the USA. We use popular destinations as a classroom where students will find historic and cultural information through guided walking tours and visits to museums and other places of interest.



CERTIFICATE

Each student will have their English level tested upon arrival and will be placed in a class accordingly. Students will receive a portfolio to store their work in as well as a certificate to take home with them as a record of their course with us.



SAMPLE PROGRAM (EXAMPLE SHOWN - RESIDENTIAL CLASSIC COURSE)

WEEK 1	MORNING	AFTERNOON	EVENING
SUN	Arrival, Induction & Campus Tour		Movie Night
MON	Placement Test & Induction Lesson (3 hours)	Half-day Excursion: Boston Freedom Trail Tour & Quincy Market	Welcome Party: Team Building/Name Games
TUES	English Lessons (3 hours)	Half-day Excursion: Boston Harbor Cruise & Tour	Halloween Party
WEDS	English Lessons (3 hours)	Half-day Excursion: Harvard Tour	Jeopardy Quiz Night
THUR	English Lessons (3 hours)	On-campus Activities: Sports, Arts & Crafts, American University Presentations	Karaoke Night
FRI	English Lessons (3 hours)	Half Day Excursion: Newbury Street Tour	Neon Disco Party
SAT	Included Full Day Excursion: Canobie Lake Park		Gym Night/Board Games/Arts & Crafts

WEEK 2	MORNING	AFTERNOON	EVENING
SUN	Local Mall Shuttles/Gym/Arts & Crafts		Movie Night
MON	English Lessons (3 hours)	Half-day Excursion: Museum of Science	Welcome Party: Team Building/Name Games
TUES	English Lessons (3 hours)	Half-day Excursion: Premium Outlets Shopping at Wrentham	Mardi Gras Party
WEDS	English Lessons (3 hours)	Half Day Excursion: MIT Tour	Minute To Win It Competition
THUR	English Lessons (3 hours)	On-campus Activities: Sports, Arts & Crafts, American High School Presentations	International Night
FRI	English Lessons (3 hours)	Half-day Excursion: Historical tour of Plymouth	Hawaiian Disco Party
SAT	Included Full Day Excursion: Newport, Rhode Island		Gym Night/Board Games/Arts & Crafts
SUN	Departure		

This is a sample program and all elements may be subject to change. Lessons may take place in the mornings or afternoons.