



# FRENCH COURSES 2024



**GET**

Global Education Tumulka

Franz-Joseph-Str. 9 - 80801 München

Tel. +49 (0)89/41 42 45 4-0

Fax +49 (0)89/41 42 45 4-22

info@get-education.com

www.get-education.com



**Qualiopi**  
processus certifié

■ RÉPUBLIQUE FRANÇAISE

La certification qualité a été délivrée  
au titre de la catégorie d'action suivante :  
ACTIONS DE FORMATION



[www.inlingua-larochelle.com](http://www.inlingua-larochelle.com)

**ADULTS**



**LONG-TERM**



**JUNIORS**



**SHORT-TERM COURSES**

# WHERE IS LA ROCHELLE?

On the sunny Atlantic coast of the Charente-Maritime department in Western France lies the exquisite town of La Rochelle. Famous for its rich cultural history, and easy-going way of life, La Rochelle was voted fourth nicest place to live in France in 2023.



## SUMMARY

**P.03** La Rochelle

**P.04** Our School

**P.06** 10 reasons to choose **inlingua** La Rochelle

**P.07** Adult Courses

**P.17** Long-term Courses

**P.18** Junior Courses

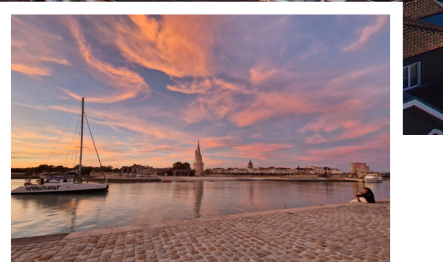
**P.28** Accommodation

**P.33** Useful Information

**P.34** Getting to La Rochelle



# La Ville Belle & Rebelle



## LA ROCHELLE

Whereas in the past La Rochelle was a pioneer town from where ships would leave to discover the New World, today the spirit of adventure of the rochelaise can be seen through extraordinary sporting achievements for a place of its size.

Among some of the most recent:

- The Stade Rochelais rugby club won the European Championship in 2022 and again in 2023
- Local Windsurfer, Antoine Albeau, won the title of World Champion in 2023 for the 25th time
- The French national sailing team are currently in La Rochelle preparing for the 2024 Olympics

### Why choose La Rochelle?

- La Rochelle is less than 3 hours from Paris
- A peaceful town with a population of 80,000
- On the coast and near 3 magnificent islands
- Over 100km of cycle paths
- Railway station and airport
- Easy and cheap bicycle hire
- Pleasant maritime climate all year round
- Free cultural events all year round
- Francofolies: one of the biggest music festivals in France
- Parks, museums and the world famous aquarium...

### Aimez-vous la gastronomie ?

The excellence of French cuisine is famous around the world, and La Rochelle is no exception. A large variety of local products can be found in the area. Try an oyster in Aytré or the typical Mouclade on the port. Explore your senses with local wines, Cognacs and Pineaux.

### Aimez-vous la culture ?

Discover the history of La Rochelle through visits to our museums and monuments with guided tours or by exploring the picturesque streets on your own.



**LA ROCHELLE:  
THE 6TH MOST  
VISITED TOWNS  
BY FRENCH  
TOURISTS**





# OUR SCHOOL

- 300M FROM *THE OCEAN*
- 500M FROM *THE COUNTRYSIDE*

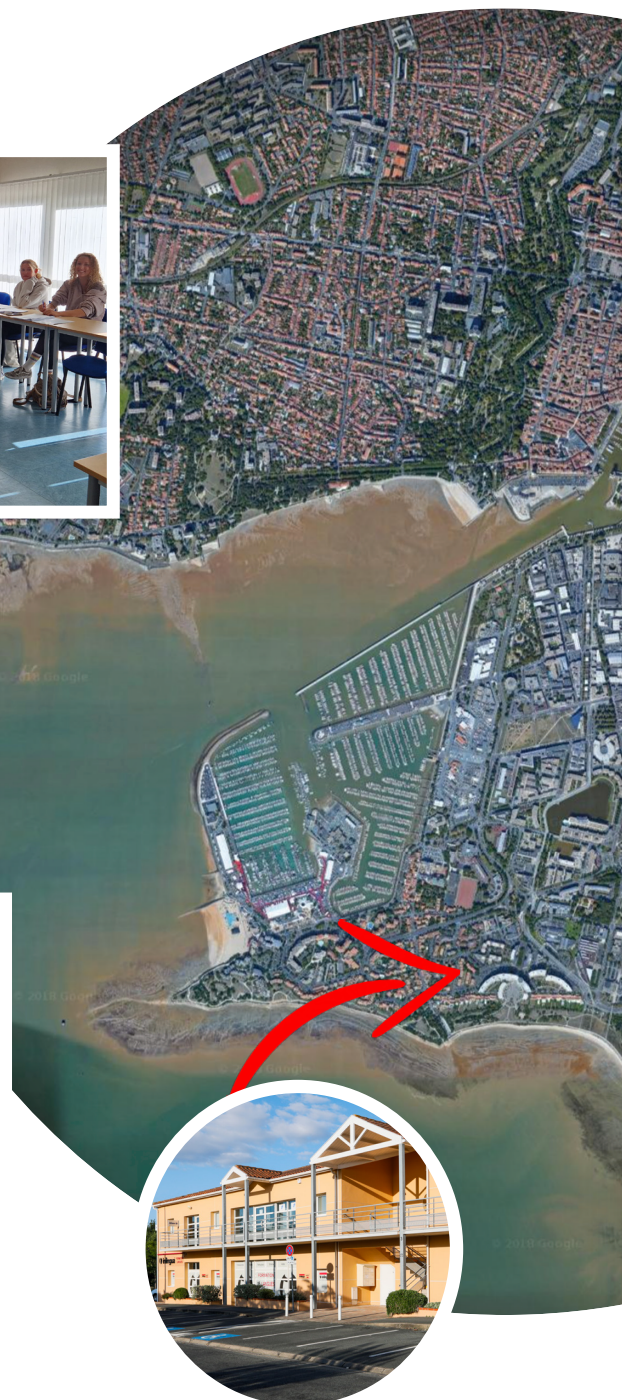
## Our facilities

- 14 classrooms
- Additional rooms in high season
- A large shady terrace area
- IT room
- Free WiFi
- Free parking
- Covered bike area
- Reading area
- Tourist information area
- Kitchen with fridge and microwave oven
- Hot and cold drinks



## About inlingua

- Open all year round
- One of 300 **inlingua** schools in over 40 countries around the world
- Ideal location – only a stone's throw from the beach and the centre of town
- An official exam centre



**inlingua**  
La Rochelle





### How to get to inlingua

- 10-minute bus ride from the centre of town. The nearest bus stop is less than 100 metres from the school and buses are every 15 minutes.
- Cycle paths from the centre of town which take you down the coast where you can take in the picturesque scenery

### Where to eat ?

Traditional French restaurants and bakeries can be found less than a minute from the school on foot. We provide our students with a list of classic French dining options in the town or next to one of our exquisite beaches.



# 10 GOOD REASONS TO CHOOSE inlingua LA ROCHELLE

## #01 SO MUCH MORE THAN JUST A LANGUAGE COURSE

- Students studying at **inlingua** are not only involved in the classes, they may also participate in a wide range of activities with the school. From evenings on the beach playing games, to running around the town for a scavenger hunt, and even day trips to Bordeaux & Nantes!

## #02 A UNIQUE TOWN AND REGION

you will enjoy discovering with us. We organize several activities outside of class to accompany the classes as you explore La Rochelle and its surrounding area.

- On Monday afternoons we organize a guided tour of the town for our new students.
- We organize at least one evening "rendez-vous" per week in some of the town's most typical locations for students to practice their French in a more relaxed environment.
- Saturday day trips with a member of our team where our clients can learn more about French culture and way of life.

## #03 A WIDE RANGE OF SERVICES:

To make your stay with us as easy as possible, we offer additional services.

A detailed map of the town will be handed out on your first day along with the tide table, and other information that will be useful during your stay.

Bus passes or even a French SIM card can make all the difference to your stay.

For any other requirements, such as laundry or transport to the Île de Ré, we will provide you with a list of useful addresses.

**For anything else, just ask!**

## #05 TRANSFER SERVICE

from La Rochelle train station or airport, but also from Nantes & Bordeaux.

## #06 AN OFFICIAL EXAMINATION CENTRE

for the TCF French proficiency exam. We can organise new sessions depending on the needs of our students.

If you would like to pass the DELF or the DALF, we can also you prepare for the exam.

## #04 AN ACCOMMODATION SERVICE

We can help you find housing that suits both your needs and your budget: homestay, residences, apartments, villas or even boats in the famous Port des Minimes.

## #07 PROFESSIONAL TRAINERS:

all of whom are native French speakers and highly qualified to teach French as a foreign language. They are particularly committed to helping you acquire new language skills & develop your love of France & La Rochelle.

## #08 A UNIQUE METHOD:

the **inlingua** method has been proven successful for 50 years all over the world and its education research centre produces modern and effective tools for language teaching.

## #09 SMALL GROUPS

offer an exceptional opportunity for all participants to immerse themselves in the language, fostering effective language acquisition and comprehensive understanding for everyone involved.

## #10 NATIONAL HOLIDAYS :

We offer three different solutions:

Lessons are held as per normal:

01/04 - 08/05 - 09/05 - 20/05

No lessons, but they are held on another day in the week:

01/05 - 01/11 - 11/11

No lessons but a replacement activity is organised by the school (cruise to an island...) 15/08

## LA ROCHELLE, VOTED BEST TOWN FOR CYCLING IN FRANCE

With over 100 kilometres of cycle paths, our students can cycle around the town safely without going on roads.

There is a bike share service with stations all around the town where students can pick up and drop of a bicycle.

It is also possible for students to rent a bicycle from **inlingua** (depending on availability).



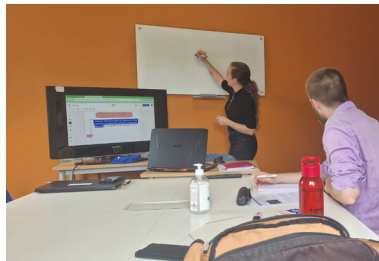
## ADULT COURSES

# SUMMARY ADULT COURSES



### **P.08-09**

General French 15h & 20h



### **P.10**

Exam Preparation



### **P.11**

30+



### **P.12-13**

50+ Culture



### **P.14**

Intensive 25h or 30h



### **P.15**

One-to-One & Combi



### **P.16**

Family Programme



### **P.17**

Long-term Courses

## ADULT COURSES

# GENERAL FRENCH

## 15- 20 HOURS

Discover the pleasures of learning French with **inlingua**'s General French programmes, tailored to fit the needs of students of all levels. Classes in small groups ensure maximal progression on the course. Through dynamic classes and interesting topics, our highly trained teachers can teach students from beginner levels to even the most advanced speakers on their French language journey.



### 15-HOUR COURSE

#### ✓ All-year round

- ✓ From 16 years-old
- ✓ 1 week minimum
- ✓ Max. 10 per group
- ✓ A1 - C1

#### ⚠ Beginners start on specific dates :

08/01 | 04/03 | 08/04 | 27/05  
08/07 | 05/08 | 30/09

### 20-HOUR COURSE

#### ✓ All-year round

- ✓ From 16 years-old
- ✓ 1 week minimum
- ✓ Max. 10 per group
- ✓ A2 - C1

#### ✗ Beginners not accepted on this course

*Not sure which level you are? Take our online test today !*



Scan this code  
to do our  
Online Level  
Test



#### Course Dates

##### All-year round

All levels, except complete beginner, are accepted all year-round and you can start whenever you wish. Take the **level placement test** on our website today to find out what level you have and which programmes are adapted to you.

o

#### Beginner Students

A beginner level is given to those who have no knowledge of French or who cannot communicate, even with simple sentences (test result < A1.3).

If a student with a beginner level registers for a course outside of specific starting dates for beginners, we will offer them an adapted one-to-one programme as stated in our Terms & Conditions on our website.

#### July & August 2024 - 15-hour Afternoon Course

This year, lessons for students on our General French 15h course in July & August will take place both in the mornings and in the afternoons. Students will either be in the morning courses OR the afternoon ones - but not both.

The week's timetable will be communicated to students after the Monday morning tests and no later than 10AM.

This organisation also applies to students already at the school before July and who are registered for a 15-hour course in July and August.

#### Afternoon 15-hours not applicable to :

- Parents with children in the Junior Morning Classes
- Students on programmes with 20 hours or more :
  - General French 20h
  - Delf preparation
  - Combi courses
  - 25/30h courses



## 20-hour Course

Dive into the discovery of French culture and history with our 20-hour course. The General French course combined with two afternoon workshops per week enable students to apply their newly acquired language skills to interesting topics.

These workshops offer our students both the chance to use their French in a more relaxed & conversational environment while discovering various points of French culture.

The workshops bring together adult students from different classes in the school. 10 to 15 people depending on the theme. The workshops take place either at **inlingua** or in the city. Students must have at least an A2 level to participate in these classes.

**Students participating in the 20-hour course will always have their General French classes in the mornings - even in July & August.**

### EXAMPLES OF WORKSHOP THEMES :

FRENCH HISTORY

MUSEUMS

LES TOURS DE LA ROCHELLE

FRENCH POLITICS

WINE & CHEESE TASTING

FRENCH GASTRONOMY

REGIONS & DEPARTMENTS

FRENCH FASHION

FRENCH LITERATURE



## Adult Summer Activity Course

When signing up for the General French course, students can choose between adding the cultural workshops OR participating in our Adult Summer Activity Course.

The activity course consists of :





- 3 afternoon sports/cultural activities per week
- 1 evening activity per week

Activities included :

- Volleyball
- Pétanque
- Laser tag/VR games
- Climbing
- Trips to museums and local towns,
- And much more.

**Some activities (surfing, sailing, etc.) require a financial participation from the student if they wish to participate.**

## Sample Programme

	MONDAY	TUESDAY	WEDNESDAY	THURSDAY	FRIDAY	SATURDAY
Morning	10:00 - 13:15 French Classes	9:00 - 12:15 French Classes*				
	*In July & August some students on the 15-hour course may be placed in afternoon groups (13:15 - 16:30)					Excursion to the île de Ré
Afternoon	14:30 Guided tour of the town	13:30 - 16:15 Cultural Workshop (20h) or Activity 	 Activity	13:30 - 16:15 Cultural Workshop (20h) or Activity 	/	Inscription obligatory
Evening		18:30 P'tit RDV	 Activity	16:30 Pétanque		

## PRICES PER WEEK AND PER PERSON

PROGRAMME	1 WEEK	2-3 WEEKS	4-8 WEEKS	9-12 WEEKS	12+ WEEKS
General French 15 hours	314 €	288 €	270 €	250 €	230 €
General French 20 hours	382 €	358 €	340 €	324 €	296 €
General French Adult Summer Activity Course	382 €	358 €	340 €	/	/
ENROLMENT FEE: 80 €					

# EXAM PREPARATION

**inlingua** La Rochelle is in contact with partner centres who offer **DEL F & DAL F** sessions throughout the year and offers preparatory courses. **inlingua** is also an examination centre for the **TCF** exam. The TCF is an internationally recognized test which measures your knowledge and skills in French and which is accepted by every school or University as a proof of a B2 level.



## ✓ All year round

✓ 1 week minimum

✓ A1 - C1

⊗ Not open to beginners

## DEL F - DAL F

With your trainers who are official examiners for the DEL F & DAL F exams you can prepare for exam levels A1 to C2.

The DEL F-DAL F classes allow students to discover the details of each exam and the acquisition of strategies to obtain the best score possible in the 4-part exam (oral and written comprehension, oral and written expression).

We are in contact with our neighboring examination centres (La Rochelle, Royan, Tours, Bordeaux) and can provide you with the calendar of the different exam sessions as soon as it is published in January or February.

## Inscriptions

Inscriptions to the DEL F take place at least 1 month before the date of the exam. If you already know the level you would like to take, we can take care of your inscription.

Otherwise, it is better to wait until you are at the school so the teachers can guide you and help you make your decision.

DEL F exam sessions are organised all year round for every level.

The Exam Prep classes focus on the written part of the exam and on the specific details of each oral test.

For students who wish to prepare for a different exam (A-Levels, Matura...) it is possible to combine group classes in the morning with One-to-One classes in the afternoons (see *Combi Courses* - p.15).

## DEL F / DAL F Programme

### General French + DEL F Prep One-to-One

- General French 15h00
- 5 hours of exam preparation on Wednesdays and Fridays from 1:30 to 4:15 (15-minute break)

### General French + DEL F Prep Multimedia

- General French 15h00
- 3 hours of one to one exam preparation (tailor made schedule during the week)
- 2 hours of multimedia - *our teachers will select exercises dedicated to exam preparation based on the student's specific needs. This tool allows for more hours if the student wishes - exercises and practice exams are available to the student even when not at the school.*

## PRICES PER WEEK AND PER PERSON

PROGRAMME	1 WEEK	2-3 WEEKS	4-8 WEEKS
DEL F/DAL F Prep One-to-One	670 €	636 €	606 €
DEL F/DAL F Prep Multimedia	576 €	565 €	540 €
ENROLMENT FEE: 80 €			



# 30+ COURSE

Throughout the month of September, **inlingua** organises a 30+ course for adult students who wish to study French with other people of their age group. Several interesting and relevant topics are covered in class each week. Students also participate in a wide range of activities each week to make sure they really get the most out of their time in La Rochelle.



📅 02/09 - 27/09

- ✓ From A2 to B2
- ✓ Open to 30+ students
- ✓ 1 week minimum
- ✓ Max. 6 students per group
- ✓ 15 or 20 hours

## Programmes

Students on our 30+ course can choose between a 15 or 20-hour programme :

### 15-hour option

- 15 hours of classes from Monday to Friday (3 hours per day)
- Afternoon/evening activities

### 20-hour option

- 15 hours of classes from Monday to Friday
- 5 hours of afternoon cultural workshops
- Afternoon/evening activities

## Timetable

### 15-hour option

#### First day:

8:30 to 9:30: Oral placement tests  
9:30 to 10:00: Presentation of the team and the week's activities

#### Monday:

10:00 - 1:15 (15-minute break)

#### Tuesday - Friday:

9:00 - 12:15 (15-minute break)

### 20-hour option

Those on the 20-hour course follow the same timetable as those doing 15 hours of morning classes. On top of these classes they have :

#### Cultural Workshops

13:30 - 16:15 (Tuesdays & Fridays)

## Programme Details

Several afternoon or evening activities are offered on top of the French course allowing our students to practice their French in a more immersive environment.

These activities include our weekly P'tit RDV, visits to museums, the towns and villages around La Rochelle, wine tasting, cognac tours, oyster tasting, and even an evening fishing in a hut over the sea with the famous carrelots in Angoulins

Some activities require financial participation from the students (surf lessons, cooking lessons, catamaran cruise etc.)

We guarantee our 30+ students the possibility of renting a bike for the duration of their stay (20€/week).

For students who want a more personalised approach to their learning, this programme can also be combined with One-to-One classes (see Combi Programmes p.15).

## PRICES PER WEEK AND PER PERSON

PROGRAMME	1 WEEK	2-3 WEEKS	4 WEEKS
30+ 15 hours	454 €	426 €	426 €
30+ 20 hours*	526 €	488 €	488 €
ENROLMENT FEE: 80 €			

\* The afternoon cultural workshops on the 20h course are with adult students of all ages.

# 50+ CULTURE

Our 50+ programme brings together students over the age of 50 who are looking for the same thing: to learn French in a relaxed environment and through discovering the cultural heritage of France and the region around La Rochelle. Whether it's through interactive language classes, cultural outings, or engaging with local traditions, our 50+ program ensures that you not only learn French but also embark on a fulfilling journey of cultural exploration and connection.



✓ 13/05 - 24/05

✓ 16/09 - 27/09

✓ Max. 6 students per group

✓ 1 week minimum

✓ A2 - B2

✓ Bus pass or bicycle included

⊗ Not open to beginners

### Programme details

The teaching method focuses on effective independent communication, allowing you to make the most of all the activities offered. In addition, the effective audiovisual tools which are used allow you to practice in realistic situations.

\* in the case where the number of participants is less than 3 **inlingua** reserves the right to put participants in groups with the 30+ programme.

### Timetable

#### First day:

8:30 to 9:30: Oral placement tests

9:30 to 10:00: Presentation of the team and the week's activities

#### Monday:

10:00 - 1:15 (15-minute break)

#### Tuesday - Friday

9:00 - 12:15 (15-minute break)

#### Cultural Workshops

13:30 - 16:15 (Tuesdays & Thursdays)

Themes ranging from French history, French cuisine, trying local specialities etc.

#### 2 Guided Tours

Discover the history and culture of La Rochelle with guided tours of museums, meeting with local artisans, visiting General Lafayette's famous ship, and much more.

#### At least 1 evening out

Enjoy the local nightlife in fantastic bars and restaurants with other students and members of staff from the school.

#### Saturday Excursions

Tour of the Île de Ré, Bordeaux and its monuments and the Cité du vin museum, visit the cellars of Cognac with a guided tour and brandy tasting, or even cruise along the Marais Poitevin on a boat

**Our visits are always accompanied by a member of the **inlingua** team, or a tour guide to help you discover hidden gems and better understand the local history.**

### Included In Price

- Transport Costs
- Visits & Activities (not including lunch)
- Bus pass or bicycle





### Example of the timetable for the first week

	MONDAY	TUESDAY	WEDNESDAY	THURSDAY	FRIDAY	SATURDAY
Morning	French classes					Excursion to the île de Ré
Afternoon	Cultural Tour <i>Guided tour of the town with a teacher</i>	Cultural Workshop <i>La Gastronomie Française</i>	Cultural Tour <i>Trip to Fouras &amp; Cognac tour</i>	Cultural Workshop <i>Découverte de spécialités locales</i>	Lunch in Marennes at <i>L'Eclade</i>	
Evening		18:30 Apéritif on the port		16:30 Oyster tasting at the school		

\* The first week focuses on French gastronomy, the second week focuses on French culture and history

Our 2-week courses take place out of the high summer season. While it is recommended that the stay be for 2 weeks, 1-week courses are also possible. However, arrivals must be in time for the first week of each course.

#### Accommodation

In terms of accommodation you can choose between a host family, a student residence, or ask for our personalised accommodation service to find the apartment, the house or the villa that you need (page 28-32).

## PRICE PER WEEK AND PER PERSON

1 - 2 WEEKS

650 €

ENROLMENT FEE: 80 €

#### Extras

It is possible to book a French cookery class during your stay. Please contact us before your arrival if you would like to set it up.

## INTENSIVE



This programme was designed for students who wish to develop their French language skills in a professional context. It is recognised by several regions in Germany in accordance with the Bildungsurlaub. Mixing our General French classes with afternoon multimedia sessions, cultural workshops and conversation classes means students cover all the different aspects of language learning.



### 08/04 - 01/11

- ✓ From 16 years-old
- ✓ 1 week minimum
- ✓ 25 or 30 hours per week
- ✓ Multimedia classes
- ✓ Cultural Workshops
- ✓ Conversation Classes (30h)
- ✓ A2 - C1
- ⚠ Adapted programme for A1
- ⚠ Beginners start on specific dates  
08/01 | 04/03 | 08/04 | 27/05  
08/07 | 05/08 | 30/09

### Programme details

Our modern multimedia tools will help our teachers efficiently train the students during the multimedia workshops. The teacher will be present during these workshops to help and advise the students.

The cultural workshops enable our students to discover fascinating points of the French way of life in a more relaxed environment.

The conversation classes then allow the students to put their newly acquired skills into action.

### Low-level Programmes

Our Intensive programmes are adapted to students with at least an A2 level. Students with an A1 level will have the cultural workshops replaced by:

- 1h15 Conversation Classes
- 1h15 Multimedia Classes

Beginner students (A0) must enrol on specific dates for the morning classes. The additional 10-15 hours will be done in Multimedia classes. It is possible to combine this with One-to-One classes for maximal progress.

### Sample Week :

MONDAY						TUESDAY		WEDNESDAY		THURSDAY		FRIDAY	
Morning		General French Classes											
Lunch break													
Afternoon		Guided tour of the town for new students		1:30-4:15		1:30-3:00		1:30-4:15		1:30-3:00			
		OR		Cultural Workshop		Multimedia workshop		Cultural Workshop		Multimedia workshop			
		Multimedia Workshop for students in their second week		4:30-5:30		3:15-4:45		4:30-5:30		3:15-4:45			
				Multimedia workshop		Conversation Class		Multimedia workshop		Conversation Class			
25h programme							Additional lessons with 30h programme						

## PRICES PER WEEK AND PER PERSON

PROGRAMME	1 WEEK	2-3 WEEKS	4-8 WEEKS
Intensive 25 hours	412 €	386 €	386 €
Intensive 30 hours	506 €	476 €	476 €
ENROLMENT FEE: 80 €			



# ONE TO ONE & COMBI

This programme is for students who would like a course tailored to fit their specific needs. The programme can be made up of one-to-one classes or combined with the General French, Intensive, and 30+ courses.

## ✓ All year-round

✓ From 16 years-old

✓ 1 week minimum

✓ 15 to 30 hours per week

ⓘ **Beginners start on specific dates**

08/01 | 04/03 | 08/04 | 27/05  
08/07 | 05/08 | 30/09

## One-to-One Courses

Our One-to-One classes offer students flexibility during their time in La Rochelle.

The course offers 15 to 30 hours per week and sessions take place with either morning or afternoon classes or set hours between 9AM and 7PM for those doing more than 20h.

## Combi Courses

5 or 10 hours of one-to-one classes can be added to the General French course or the 30+ programme in September.

One-to-one classes take place in the afternoon. Your timetable will be given to you on your first day.

NUMBER OF HOURS	PROGRAMME	PROGRAMME WITH GENERAL FRENCH	PROGRAMME WITH 30+
20h00	15 hours of group classes + 5 hours of one-to-one	Combi A	Combi B
25h00	15 hours of group classes + 2 workshops + 5 hours of one-to-one	Combi C	Combi D
	15 hours of group classes + 10 hours of one-to-one	Combi E	Combi F
30h00	15 hours of group classes + 2 workshops + 10 hours of one-to-one	Combi G	Combi H
	15 hours of group classes + 15 hours of one-to-one	Combi I	Combi J



## PRICES PER WEEK AND PER PERSON

Bildungsurlaub Approved

PROGRAMMES	1 WEEK	2-3 WEEKS	4-8 WEEKS
One-to-one 15h	1 140 €	1 110 €	1 080 €
One-to-one 20h	1 520 €	1 480 €	1 440 €
One-to-one 25h	1 900 €	1 850 €	1 800 €
One-to-one 30h	2 280 €	2 220 €	2 160 €
Combi A 20h	670 €	636 €	600 €
Combi B 20h	834 €	796 €	756 €
Combi C 25h	746 €	712 €	676 €
Combi D 25h	906 €	858 €	820 €
Combi E 25h	1 058 €	1 012 €	966 €
Combi F 25h	1 214 €	1 166 €	1 116 €
Combi G 30h	1 126 €	1 082 €	1 036 €
Combi H 30h	1 286 €	1 228 €	1 180 €
Combi I 30h	1 430 €	1 376 €	1 326 €
Combi J 30h	1 594 €	1 536 €	1 476 €
ENROLMENT FEE: 80 €			

# FAMILY PROGRAMMES

**inlingua** La Rochelle provides a variety of activities suitable for parents, grandparents, and children where everyone can tailor their experience to their preferences. You have the flexibility to select from a range of activities, whether you want to include French lessons or not. Our goal is to ensure that everyone can make the most of their time with us by enjoying activities and courses that match their interests and needs.



## FAMILY PROGRAMME

Our French classes are open to children from the age of 8 at Easter and during the Summer holidays (see page 20).

Group classes take place in the mornings no matter the age of the participant. **inlingua** offers alternative activities during the French classes, especially for younger children.

For children under the age of 6, **inlingua** offers a baby sitting service. Our babysitters are all professionally trained to ensure the utmost safety of your children, and they may even learn a bit of French along the way!

## SAILING PROGRAMME

**inlingua** works hand in hand with our partners at the La Rochelle Nautique sailing school, only a short walk from the school.

Sailing lessons take place in the mornings from 10 o'clock to 1 o'clock:

- For 4/5 year-olds - le jardin des mers
- For 6/7 year-olds - les moussaillons
- For 8/9 year-olds - l'optimiste
- For 10/12 ans catamaran or windsurfing

## ADDITIONAL SERVICES

Our programme includes an activity with a member of the **inlingua** team between 9 and 10 o'clock, the transport from the school to the sailing club, the club's sailing licence with insurance, and alternative activities in case the weather conditions do not allow for sailing.

Homestay accommodation can be possible for this programme depending on availability in high season.

We can also help you find an apartment or house adapted to your needs (see page 32).

FAMILY PROGRAMME	CHILD CARE	SAILING
0 to 3 years old	Quote on enquiry	/
4 to 5 years old	Quote on enquiry	298 €
6 to 7 years old	/	298 €
7 to 9 years old	/	385 €
From 10 years old	/	385 €
ENROLMENT FEE: 80 €		





# LONG-TERM COURSES

**inlingua**'s long term courses enable students to obtain the B2 level which is necessary to apply to French higher education.

**inlingua** offers an ideal learning structure, with a tutor being assigned to each student to closely monitor their progress and make sure they have all the tools they need to reach their objective. A language level test will be carried out once every term to show the student their progression.



## Programme Details

We recommend taking part in the 20h programme to maximise your learning potential. However, the 15h programme is also available for those who wish to have fewer hours.

**inlingua** also offers a full support service to help students get set up in France offering help with :

- Documents for visa application
- Finding accommodation
- Guarantor service
- Insurance & banking services
- Bus card, SIM card
- Applying to higher education
- And much more

Our partners at higher education schools and universities accepted to examine your application before you have reached the required B2 level. This means you can already have your studies planned out before even arriving in France to learn French. You can choose what you wish to study from a wide range of domains such as:

- Marketing
- Management
- Human Resources
- Fashion
- Tourism
- Computer Science
- Law
- Cuisine
- And much more...

The school you choose will examine your application and will give you an answer within a month. We will ask for students to choose at least three schools to which we will apply in their order of preference.

Once you have received your acceptance letter from the school, it is up to you to reach the B2 level before the beginning of the next school year.

**For more details, ask us for the Long Term Courses brochure or download it from our website.**



Scan this code to see our Long-term Courses brochure online

PROGRAMME	LEVELS A0 - B1			LEVEL B1 → B2
	1 TERM 12 WEEKS	2 TERMS 24 WEEKS	3 TERMS 36 WEEKS	1 TERM 12 WEEKS
15 hours	2 320 €	4 506 €	6 286 €	/
20 hours	3 080 €	5 818 €	8 117 €	/
25 hours	/	/	/	3 643 € students enrolled for one term only
15h General French + 5h Exam Prep + 5h University Prep				2 823 € students enrolled for more than one term
ENROLMENT FEE : 140 €				

## JUNIOR COURSES

# SUMMARY JUNIOR COURSES



**P.19**

School Groups



**P.20**

Junior French Course 15h



**P.21**

Full-day Programmes



**P.22**

Camp - Multiactivity



**P.23**

Camp - Sailing/Windsurfing



**P.24**

Camp - Sea, Surf & Wind



**P.26**

Junior Cruise



**P.27**

Junior Accommodation



# SCHOOL GROUPS



## IMMERSION IN FRANCE

What better way to motivate and inspire your students throughout the year!

**inlingua** La Rochelle offers a school programme specially adapted for groups. We regularly receive groups from all over the world such as Austria, Australia, Spain, Italy, Tunisia, Ukraine, and even as far as Vietnam.



Scan this code to see our School Groups Brochure online

### Classes

Classes in small groups are focused around oral communication and enable students to progress faster. Lessons are generally in the mornings but may be organised in the afternoons to reduce the cost.

### Activities

Activities are either organised by the accompanying adult from the group, or under the supervision of the team at **inlingua**.

### Accommodation

Accommodation can either be organised in host families, at the youth hostel right next to the school, or in a 2/3 star hotel.

**Each project is meticulously studied in terms of programmes, transfers, accommodation, and activities to produce a quote that meets both your expectations and your budget.**

Get in touch with us to ask for our special School Groups brochure or download it from our website.

# JUNIOR FRENCH COURSE

Join us for our Junior morning French class, where students embark on an enriching journey into the world of the French language and culture. Through the **inlingua** method, they'll have the opportunity to explore all aspects of this rich heritage, making the most of their immersive experience



📅 25/03 - 05/04

📅 17/06 - 23/08

✓ From 8 years-old

✓ 1 week minimum

✓ 15 hours per week

✓ Max. 10 per group

⚠️ Dates for beginners:

01/07 | 15/07 | 27/07 | 12/08



Scan here to see a sample programme online

## Classes

Our aim is for our students to learn French in a natural way and work on speaking and writing skills through lively and interactive activities.

We emphasize the importance of speaking in real-life situations and working on conversational fluidity.

Parents also participating in our courses have frequently told us their child had got a real taste for the French language after their stay with **inlingua**.

## Groups

Through our online level placement test and an oral test with a teacher on the first morning, our teachers will make sure that the students participate in classes appropriate for their level to ensure optimal progress with their French.

## Beginners

Our Junior Courses are designed for students who have already studied French at school. It is possible for beginners to sign up, but this must be done on one of our specific dates for beginners.

## Class projects

Each week the students work on a class project allowing them to use all they have learned in a real-life situation, for example: setting up a travel blog to talk about their time in La Rochelle, activities that can be done here, giving advice to future travellers.

Students often create their own short films, or write stories in the classic French "bande dessinée" style.

## Programme

**Monday:** 10:00 to 1:15

**Tuesday to friday:** from 9:00 to 12:15

## PRICE PER WEEK AND PER PERSON

PROGRAMME	1 WEEK	2 WEEKS	4-8 WEEKS
Junior French Course 15h	320 €	298 €	280 €

ENROLMENT FEE: 80 €



# FULL-DAY COURSES



- ✓ From 13 years-old
- ✓ 3 Programmes Available
- ✓ 1 week minimum
- ✓ 15 hours per week
- ✓ Max. 10 per group
- ✓ Optional Meals (70€/week)

Lunch : Monday to Friday

Dinner : Tuesdays & Thursdays

## COURSE DATES

- ✓ **Dates for Multiactivity**  
25/03 - 05/04 | 17/06 - 23/08
- ✓ **Dates for Sailing/Windsurfing**  
01/07 - 23/08
- ✓ **Dates for Sea, Surf, & Wind**  
01/07 - 09/08
- ⚠ **Dates for beginners:**  
01/07 | 15/07 | 27/07 | 12/08

## Course Details

### Classes

Monday

10:00 to 1:15

Tuesday to Friday

9:00 to 12:15

Lunch is supervised by a staff member

### Afternoon Activities

Monday - Friday

2PM to 6PM

Transport to and from the activity is included in the course

### Evening activities

Tuesdays & Thursdays

Transport from and to accommodation is not included for evening activities

### Saturday Excursions

The Saturday day trip is included in the price.

## Multiactivity

We offer a wide range of exciting and enjoyable activities to our students

For more information see p.22

## Sailing & Windsurfing

The sailing club is less than a 1km from **inlingua**. Each week, students can choose between sailing and windsurfing (*this choice has to be made at the time of booking*).

All the equipment is provided on site, and the activity is supervised by professional sailors.

For more information see p.23

## Sea, Surf, & Wind

Our Sea, Surf, & Wind course offers students the opportunity to discover the thrilling sensations of watersports in La Rochelle and the surrounding area.

For more information see p.24-25

## PRICE PER WEEK AND PER PERSON (WITHOUT ACCOMMODATION)

PROGRAMME	1 WEEK	2-3 WEEKS	4-8 WEEKS
French + Multiactivity	628 €	610 €	580 €
French + Sailing or Windsurfing	730 €	720 €	690 €
French + Sea, Surf, & Wind	989 €	960 €	940 €
Additional 5 hours One-to-One	365 €	365 €	365 €
<b>ENROLMENT FEE: 80 €</b> <b>ADDITIONAL COST FOR MEALS : 70 € /WEEK</b>			

## JUNIOR COURSES

# CAMP – MULTIACTIVITY

Experience an unforgettable summer with our Multiactivity program! Dive into the world of French language and culture during morning classes, and in the afternoons, explore a diverse range of enjoyable activities, making the most of your summer holiday.



✓ 24/03 - 06/04

✓ 16/06 - 24/08

✓ From 13 years-old

✓ 1 week minimum

✓ 15 hours per week

✓ Max. 10 per group

✓ Homestay included

✓ Possibility of booking different programmes each week

ⓘ Dates for beginners:

01/07 | 15/07 | 27/07 | 12/08



Scan here to see a sample programme online

### Course Details

#### Classes

Monday  
10:00 to 1:15

Tuesday to Friday  
9:00 to 12:15

(Lunch is supervised by a staff member)

#### Afternoon Activities

Monday - Friday  
2PM to 6PM

Transport to and from the activity is included in the course

#### Evening activities

Tuesdays & Thursdays (transport home included with the school minibuses)

#### Saturday Excursions

A full-day excursion to nearby towns and islands is included in the price.

#### Full-board accommodation

Homestay accommodation with all meals is included in the cost of the camp.

For more information see p.27

### Transport

All students on our Junior Summer Camps receive a bus card or a bicycle for their time in La Rochelle (depending on availability).

### Optional Extras

#### One-to-One Classes

Students on the Multiactivity course can choose to add 5 hours of One-to-One classes each week.

These classes take place during the first activity of the afternoon and students then join the rest of the group either for the end of the activity, or for the following one.

#### Airport Transfers

We can organise for pick ups and drop offs in Bordeaux and Nantes airports with a member of staff.

For more information see p.33

#### Residence Accommodation

During July & August, students can choose to stay at the residence next to the school

For more information see p.27

## PRICE PER WEEK AND PER PERSON

(FULL-BOARD HOMESTAY ACCOMMODATION AND ACTIVITIES INCLUDED)

PROGRAMME	1 WEEK	2-3 WEEKS	4-8 WEEKS
French + Multiactivity	988 €	960 €	940 €
5 additional hours of One-to-One	365 €	365 €	365 €
ENROLMENT FEE: 80 € / ADDITIONAL FEE FOR STUDENT RESIDENCE OR SPECIAL DIET (PAGE 27)			



# SAILING / WINDSURFING



 30/06 - 24/08

The sailing club La Rochelle Nautique is located less than 1km from **inlingua** and 200 meters from our student residence. Watersports take place from Monday to Friday between 2pm and 6pm.

This course is a great opportunity for our students to meet young French people who are members of the club or other teenagers on holiday.

Around 75 students come to sail every week, 95% of whom are French, so it's a great opportunity to meet people and practice the language.



Scan here to see a sample programme online

## Sailing Course

The sailing course takes place in catamarans where students are 2 per boat. When possible, each student is teamed up with a French teenager for them to get the best out of their immersive experience.

Students have lunch at the school with everyone else before leaving to go to the club around 1:40. The sailing classes then start at 2pm.

Student prepare the boats and go sailing with their instructor for 4 hours every afternoon.

It is possible to choose different programmes on different weeks upon booking. However, programmes may not be changed during the course.

## Windsurfing Course

Discover the joys of zipping across the water with our windsurfing course offering 4 hours of classes every afternoon (Mon-Fri)

There are different groups according to the participants' levels so don't worry if you're a complete beginner!

The windsurfing classes are quite physically demanding so think about maybe combining this programme with a week of sailing or multiactivity.

It is not possible to change to a different course mid-week and we cannot guarantee a place in a different programme to those confirmed at the time of inscription. This depends on availability at the sailing club.



Students can choose to do different courses on different weeks  
(e.g. 1 week Multiactivity, 1 week Sailing, and 1 week Windsurfing)

This must be organised at the time of booking.

## PRICE PER WEEK AND PER PERSON (FULL-BOARD HOMESTAY ACCOMMODATION AND ACTIVITIES INCLUDED)

PROGRAMME	1 WEEK	2-3 WEEKS	4-8 WEEKS
French + Sailing	1 120 €	1 060 €	1 030 €
French + Windsurfing	1 120 €	1 060 €	1 030 €
ENROLMENT FEE: 80 € / ADDITIONAL FEE FOR STUDENT RESIDENCE OR SPECIAL DIET (PAGE 27)			

# SEA, SURF, & WIND

Come and discover our premium programme - Sea, Surf, & Wind. A course which will enable the more adventurous of our students to discover some of the best watersports available in the area around La Rochelle from Surfing, sand yachting, & wakeboarding, to skating, sailing and much, more!



30/06 - 10/08

- ✓ From 13 years-old
- ✓ 1 week minimum
- ✓ 15 hours per week
- ✓ Max. 10 per group
- ✓ Homestay included
- ✓ Possibility of booking different programmes each week

Dates for beginners:

01/07 | 15/07 | 27/07 | 12/08



Scan here to see a sample programme online



### Course Details

#### Classes

Monday  
10:00 to 1:15  
Tuesday to Friday  
9:00 to 12:15

(Lunch is supervised by a staff member)

#### Afternoon Activities

Monday - Friday  
2PM to 6PM

Transport to and from the activity is included in the course

#### Evening activities

Tuesdays & Thursdays (transport home included with the school minibuses)

#### Saturday Excursions

A full-day excursion to nearby towns and islands is included in the price.

#### Full-board accommodation

Homestay accommodation with all meals is included in the cost of the camp.

For more information see p.27

### Activities

Thanks to partnerships with local sports structures, our students can take part in a wide range of new activities such as:

#### Surfing Lessons

With a surf instructor offering classes wherever the waves are that day. The instructor picks up the students and drives them to the best spot of the day to guarantee good learning conditions.

On days where conditions do not allow for surfing classes (rough seas, etc.), the activity is replaced another sports activity (e.g. skateboarding etc.).

#### Sand Yachting

Our partnership with a local club in La Faute sur Mer allows students to immerse themselves in this unique activity for extended 3-hour trips along the picturesque beach.

As students glide across the sands in 3-wheeled boats, they're treated to not only an adrenaline-packed adventure but also a chance to appreciate the beauty of the coastal scenery.

## PRICE PER WEEK AND PER PERSON

(FULL-BOARD HOMESTAY ACCOMMODATION AND ACTIVITIES INCLUDED)

PROGRAMME	1 WEEK	2-3 WEEKS	4-8 WEEKS
Sea, Surf, & Wind	1 320 €	1 250 €	1 250 €

ENROLMENT FEE: 80 € / ADDITIONAL FEE FOR STUDENT RESIDENCE OR SPECIAL DIET (PAGE 27)





### Wakeboard / Waterskiing

We take our students to Aiguillon sur Mer for waterski, kneeboard, and wakeboard sessions guided by their instructors. After a few sessions there are even ramps available for the more adventurous students!

Students also have access to two obstacle courses to tackle on the water, but be careful not to fall off!

### Sailing

With the **inlingua** group leaders, our students go to our partner clubs offering sailing classes. Teamed up in twos on boats, they discover the joys of cruising around the bay of La Rochelle while learning the basics of sailing.

Sailing classes can depend on the tides and will take place when the conditions allow for this.

### Stand-up Paddle

Our students go off on adventures with paddleboards. They start by going down a peaceful canal in La Rochelle before taking to the sea once they have mastered the basics.

We organise courses for the students to go through and team races. Sometimes we rent a XXL paddleboard allowing for fun team-building exercises with all the students on the same board.

### Sample programme *(the programme changes each week depending on the weather and tides)*

	MONDAY	TUESDAY	WEDNESDAY	THURSDAY	FRIDAY	SATURDAY
Morning	French Classes					Excursion to the 'île de Ré
Afternoon	Surfing Classes	Underwater Photography & Drone Flying Course	Tree-top Zipwires	Sand Yachting	Moutnain Kiteboarding	
Evening	At home or at the residence	Barbecue at the school	At home or at the residence	Party on the beach with Group Leaders	At home or at the residence	

**Waterski, Wakeboard, Kneeboard, Skateboarding, Zipwires, Sand Yachting, Surfing, Climbing, Slackline, Trampoline, Drone Flying Courses**  
**And much more!**

# JUNIOR CRUISE



With our partners at La Rochelle Nautique, **inlingua** offers you a "live-in" activity on board one of their yachts. With a professional French skipper, set off for an unforgettable adventure on the sea with sailing swimming, cooking on board, fishing and more! Learn the joys of sailing in a holiday atmosphere. Life at sea is a dream come true!

✓ 15/07 - 19/07

✓ 29/07 - 02/08

✓ 12/08 - 16/08

✓ From 14 years-old

✓ 1 week minimum of French classes before the cruise

✓ 5 days of sailing

✓ Accommodation on board

⚠ Minimum A1 level

### Course Details

#### Departure

Monday 9AM

#### Arrival

Friday 5PM

#### Accommodation

#### On Board

Students receive full-board accommodation on the boat. Meals are either had on board or at a restaurant in a port where they are staying for the night.

#### Weekend before and after the cruise

Full board accommodation is included the weekend before the cruise and the Friday evening when the boat gets back to La Rochelle. Departures are on the Saturday.

Those staying at the residence may be moved to stay with a host family the night before and the night after the cruise depending on availability at the residence during that week.

### Living on the boat

A 30-foot yacht, (9.5m) which brings together comfort and speed.

**5 students and a skipper share the living quarters:**

- 2/3 private cabins
- Kitchen
- Living area
- Bathroom
- Toilet

**Different types of navigation will be addressed:**

- Cruising
- Port manoeuvres
- Trimming the sails
- Plotting a course on a chart
- Racing strategies.

**The navigation zone includes:**

- The bay of La Rochelle
- Ile de Ré
- Ile d'Aix
- Ile d'Oléron
- Trips right up to Brittany or even down to the Gironde.

## PRICE PER WEEK AND PER PERSON

PROGRAMME	1 WEEK
Junior Cruise	890 €
ENROLMENT FEE: 80 €	



# ACCOMMODATION JUNIOR CAMPS



## HOMESTAY

📅 24/03 - 06/04

📅 16/06 - 24/08

✓ Included in Camp prices

Discover the French way of life through an authentic experience of French living. Our host families are individually selected for their friendliness and security. We regularly meet with them in order to create a true relationship based on trust.

Our hosts live on average 30 minutes from the school either by bike or by bus (max. 45'). Students can choose between a bicycle or a bus card for their time in La Rochelle (depending on availability of bicycles).

The cost of homestay accommodation is included in the package price of Junior Camps. A pick up and drop of service is also included for arrivals in La Rochelle - either the host or someone from the school will take care of this.

### Meals

#### Full board

- Breakfast : Provided at home by hosts
- Lunch : Provided at the school by a catering company
- Dinner : Provided at home except on evenings where activities are organised with the school

## STUDENT RESIDENCE

📅 30/06 - 24/08

✓ From 14 years-old

⚠️ Additional cost for residence accommodation

We also offer accommodation in a residence only a short walk from the school (600m). All the junior rooms are grouped together on the same floor where our group leaders live on site taking care of activities, meals, and the safety of the group.

- Each room has two beds, toilets and a shower.
- Free WiFi throughout the residence
- Common area downstairs with drinks and snacks
- Large swimming pool with a terrace outside
- Rooftop terrace with a 360° view of the port and the ocean

A laundry service is included with a partner near the residence, and bedding is changed regularly.

### Meals

#### Full board

- Breakfast : Provided at the residence
- Lunch : Provided at the school by a catering company
- Dinner : In one of our several partner restaurants near the residence

## PRICE PER WEEK AND PER PERSON

SERVICE	1 WEEK
Additional fee - Junior Summer Residence	340 €
Additional fee - Special Diet (vegetarian, vegan gluten free...)*	50 €

\* Students following a gluten free diet may not choose the Residence option - this is only compatible with homestay

# ACCOMMODATION

Vieux port  
de La Rochelle



Plage Des Minimés





Escale marine



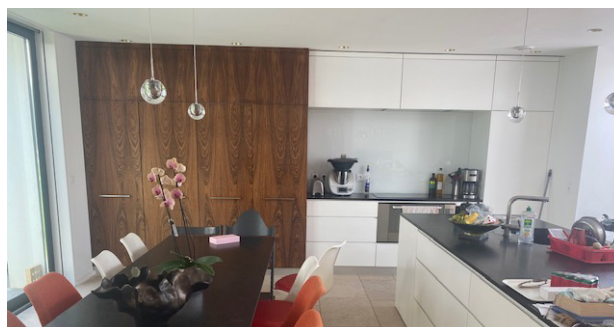
New Rochelle








**inlingua®**  
*La Rochelle*



## ACCOMMODATION

# HOMESTAY



-  **All-year round**
-  **From 16 (Adult courses)**
-  **1 week minimum**
-  **Half-board Accommodation**
-  **Arrivals on Sundays**
-  **Departures on Saturdays**
-  **On average 30 minutes from the school by bike or by bus.**  
*Maximum distance, 45 minutes by bus.*

Homestay accommodation enables you to embrace a fully immersive experience into French culture, cuisine, and way of life in a relaxed environment. If you are looking for an experience of "la vie rochelaise", this is the option for you!

We work with a network of local families who enjoy welcoming students from all over the world for the enriching cultural experience that guests bring to their homes.

Arrivals take place on Sundays and departures on Saturdays. Your hosts will pick you up from either the airport or train station upon arrival, and they will bring you to school on your first morning to show you the way.

Prior to your arrival, you will receive your host's profile, which includes information on the person/people you will be staying with, their home address, email address, phone number and the details of how to get from their house/flat to the school.

You can also request for a host family with a private bathroom for an additional cost. This will include a shower and a sink for you to wash. Toilets, however, may be in a different room.

Our hosts will provide students with half-board accommodation (breakfast and dinner) and full-board on Sundays.

## PRICES PER WEEK AND PER PERSON

DURATION - BOARD	UNDER 3 MONTHS	FROM 3 MONTHS
Homestay - Half-board	225 €	180 €
Homestay - Private Bathroom or Special Diet (vegetarian, vegan, gluten free)	270 €	230 €
Extra Night	38 €	30 €
ACCOMMODATION ADMIN FEE: 70 € / PERSON		

# NEW ROCHELLE

📅 07/04 - 24/08

- ✓ From 18 (Adult courses)
- ✓ 1 week minimum
- ✓ Self-catering
- ✓ Arrivals on Sundays
- ✓ Departures on Saturdays
- ✓ 5 minutes from the school



The Résidence New Rochelle is ideally located only a 5-minute walk from **inlingua**. You will find an open common area and a large swimming pool. An ideal location only 300 metres from the beach!

The studios are around 16m<sup>2</sup> and are fully equipped with a kitchen area, a bedroom area and a bathroom

It is possible to book a parking space for an additional 15€/week

**Included in the price:**

- Towels and bed linen
- Wifi throughout the residence

	LOW SEASON (SEPT - JUNE)		HIGH SEASON (JULY - AUGUST)
Studio/week	385 €		515 €
Studio/month	More than 24 weeks : 589 €	Fewer than 24 weeks : 779 €	1 199 €
Extra night	70 €		80 €
TOURIST TAX : 4,20 € / PERSON & PER DAY / ACCOMMODATION ADMIN FEE: 70 € / PERSON			

# ESCALE MARINE

📅 01/01 - 29/06

📅 01/09 - 31/12

- ✓ From 18 (Adult courses)
- ✓ 1 week minimum
- ✓ Self-catering
- ✓ Arrivals on Sundays
- ✓ Departures on Saturdays



This 3\* residence is located near the centre of town; You can walk to the famous Vieux Port in under 10 minutes, or even faster with the sea bus (boat). **inlingua** is only a 5-minute bus ride, a 10-minute cycle, or an enjoyable 20-minute stroll away from the residence.

The studios are for one or two people and are modern and comfortable. The studio apartments are all 18m<sup>2</sup> abd are equipped with a kitchen area, a sleeping area, and a bathroom.

**Services included**

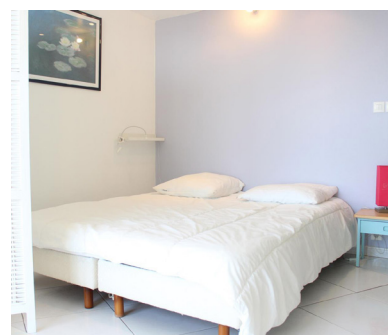
- A heated indoor pool
- Open all year-round
- Wi-Fi in all the studios

LOW SEASON - SEPTEMBER TO JUNE	
Studio/week	390 €
Studio/month	680 €
Extra Night	70 €
TOURIST TAX : 2.30 € / PERSON & PER DAY / ACCOMMODATION ADMIN FEE: 70 € / PERSON	



## ACCOMMODATION

# PERSONALISED ACCOMMODATION SERVICE



**inlingua** is partners with the biggest estate agency in La Rochelle who have holiday apartments to let throughout the year. This can be a good option for families travelling together or for people who would like their own space during their time in La Rochelle.

These places have been selected for:

- Their proximity to the school and the beach/centre of town
- Their comfort and functionality

Please let us know your requirements for an apartment, we will contact our partners and send you a list of options within 48 hours.

Once you have chosen an apartment to rent, a deposit must be paid within 8 days of confirming your booking.

Stays are from Saturday (4pm) to Saturday (12am), keys may be picked up from the agency near the school when you arrive.

If the agency is closed, the keys will be in a safe outside the front door - we will send the code to access the safe

Wifi is not included in the rental but can be booked in advance through the agency.

There is a small difference between the prices quoted by the agency and the price on the final invoice due to the additional costs for services.

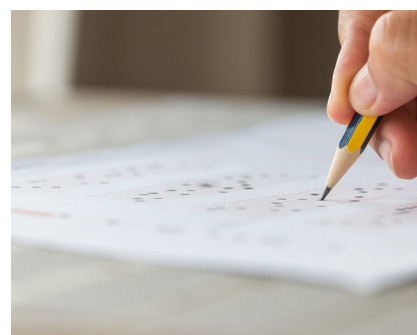
These services include:

- Towels
- Bed linen
- Tourist Welcome Pack :  
*Toilet paper, bin bags etc.*
- Cleaning upon departure
- Tourist tax (for adults)

## PRICE RANGE PER WEEK

	LOW SEASON	JULY - AUGUST
Studios	250 - 300 €	300 - 420 €
T2 (1 bedroom)	300 - 370 €	390 - 590 €
T3 (2 bedrooms)	380 - 470 €	530 - 750 €
T4 (3 bedrooms)	500 - 620 €	700 - 1 000 €
ACCOMMODATION ADMIN FEE: € 70/PERSON		

# USEFUL INFORMATION



## JUNIOR TRANSFERS (PRICE PER TRIP)

NANTES AIRPORT	BORDEAUX AIRPORT
100 €	120 €

A member of the **inlingua** team will come to pick up the student from the airport when they arrive and take them to their place of accommodation

If several students arrive at similar times, we may ask them to wait for the next arrival with the group leader. In this case a meal will be provided if necessary.

## FIRST DAY OF CLASSES

### MONDAY MORNING

TIME OF ARRIVAL AT SCHOOL	START OF CLASSES
08:30	10:00

On the first day students are asked to come to the school at 8:30 for a presentation of the team, their programme, and the town. Breakfast, coffee, and fruit juices are served by **inlingua**.

An oral test in the form of a conversation with a teacher is organised for all the new students so we can put together the groups for the coming week.

Our online level test is vital as it helps us prepare the courses and the groups. We thank students to do this test at least two weeks before their arrival. This is even more important for courses with level requirements (30+, 50+, Workshops, etc.).

## TRAVEL INSURANCE

### STUDENTS COMING FROM WITHIN THE EU

DURATION	6-40 YEARS OLD	40-65 YEARS OLD
1 week	10 €	12 €
2 weeks	20 €	24 €
Monthly rate	34 €	40 €

### STUDENTS COMING FROM WITHIN THE EU

DURATION	6-65 YEARS-OLD
1 week	14 €
2 weeks	28 €
Monthly rate	52 €

## CANCELLATION INSURANCE

COURSE AMOUNT	INSURANCE COST
700 - 1 300 €	30 €
1 300 - 3 700 €	50 €
3 700 - 7 300 €	81 €

For amounts greater than 7 300 €, please contact us for a quote.

## ACTIVITIES FOR ADULTS

ACTIVITY	PRICE
Sailing / Windsurfing	272 € / week
Gym Membership	From 20€ / week
Cookery Classes	60 €
Surfing lessons	50 €

These prices may change depending on the provider available.

# GETTING TO LA ROCHELLE



## Arrivals by train

The beautiful train station of La Rochelle is located in the heart of the city less than 10 minutes by bike or by car from **inlingua**. If you are using our personalised accommodation service, or staying in one of our partnered residences, a transfer can easily be organised for 30€.



## Arrivals in Nantes or Bordeaux

Transfers from Nantes or Bordeaux airports to La Rochelle: from 50€

Taxi: From 230€

Trains: from 50€ (airport shuttle + train)

- 2 trains per day on average
- A shuttle service links the airport to the train station
- 4 buses per day on average

## Arrivals in Paris

A transfer with a private driver can be organised from the airport to one of the train stations in Paris where students can jump on a train to La Rochelle.







ICELAND  
Reykjavik



+ ALGERIA, EGYPT, MOROCCO, TUNISIA,  
CANADA, MARTINIQUE, SENEGAL

TURKEY  
Istanbul  
Antalya



## ESTIMATED PRICES FOR TRANSFERS

ADULT TRANSFERS	NANTES AIRPORT TO LA ROCHELLE	BORDEAUX AIRPORT TO LA ROCHELLE	PARIS AIRPORT TO LA ROCHELLE
Taxi one way	230 € - 400 €	290 € - 450 €	-
Train one way	60 € - 80 €	70 € - 90 €	90 € - 140 €
Taxi + Bus	-	-	110 € - 140 €
Taxi + Train	-	-	180 € - 220 €

FROM LA ROCHELLE AIRPORT OR TRAIN STATION TO ACCOMMODATION: € 34

These prices are estimated

Upon request, a quote will be sent to the student and an additional invoice will be sent once confirmed.

Transfers cannot be organised more than 3 months before the student's arrival in La Rochelle.



inlingua La Rochelle/French Courses



inlinguaFR



**inlingua®**  
*La Rochelle*